	File: SOP DPS 10 - Interceptor Inspection_r0_16-09-10	
	Environmental Management System	Page 1 of 10

SOP

Interceptor Inspection for DPS


Revision List

Revision No.	Description	Date
0	First issue	16.09.2010
1		
2		
3		
4		

Written by:	Verified by:	Approved by:
DPS Environmental Representative	Regulatory Affairs Office, Environmental Coordinator	DPS Station Manager
K. Agius [signed]	C. Abela [signed]	J. Drago [signed]
	Assistant Manager – DPS	
	E. Borg [signed]	

Table of Contents

1.	Aim and Scope	2
2.	References.....	2
3.	Terms and Definitions	2
4.	Responsibilities.....	2
5.	Operative Rules.....	3
5.1	Interceptor Inspection Plan.....	3
5.2	Interceptor Inspection requirements	3
5.3	Reporting	4
6.	Reference Documents	4
Annex 1	5
Annex 2	7
Annex 3	9

	File: SOP DPS 10 - Interceptor Inspection_r0_16-09-10	
	Environmental Management System	Page 2 of 10

1. Aim and Scope

Objective of this operational procedure is to specify detailed rules, times and responsibility related to the inspections of interceptors at Delimara Power Station. This SOP is related to routine plant inspections carried out by the operations section. All interceptors are indicated in **Annex 1 on drawing number DPS/XZ/84 – Pits and Interceptors**.

2. References

EN ISO 14001:04, clause 4.4.6

3. Terms and Definitions

RE	Responsible Engineer – Shift Operations Engineer
GO	Generation Officer
OP	Pump House Operator
SOP	Standard Operating Procedure


4. Responsibilities

Responsible Engineer (RE)

The Responsible Engineer shall ensure that the 'per shift routine checks' are being carried out and logged. The RE shall carry out monthly inspections in accordance with this SOP and compiles a report of the current conditions and cleaning procedures undertaken during the previous month. The RE shall initiate any cleaning and maintenance interventions necessary and record tasks requested.

Pump House Operator (OP)

Persons detailed to carry out routine inspections on shift basis in accordance with this SOP. They are to identify source of accidental introduction of oils into interceptors and take

	File: SOP DPS 10 - Interceptor Inspection_r0_16-09-10	
	Environmental Management System	Page 3 of 10

immediate measures to eliminate source and/or contain proliferation to other interceptors downstream. They are to inform the GO immediately of any presence of debris or oil in interceptors. They are to log any occurrences in Shift Interceptor Inspection Form.

Generation Officer (GO)

The GO is to take immediate action according to the urgency of the situation to remediate and prevent oil contamination reaching the sea. Report and request cleaning intervention through normal channels. Initiate emergency procedures as per Emergency Plan for Oil Spills if there is a risk of contamination reaching the sea.

5. Operative Rules


5.1 Interceptor Inspection Plan

Since there are various sources of water to be treated in one or more interceptors at any one time, the OP's carry out a visual inspection at least once per shift (3 times a day) and prior to draining bunds during the rain season, to identify any oil presence. It is the responsibility of the RE to ensure the above inspection procedure for interceptors is followed. The OP is to fill in **Annex 3 - Template 10.2 – Per Shift interceptor Inspection**. Further the RE shall on a monthly basis verify the proper maintenance of the interceptors and consequently compiles a report, issuing maintenance work requests if necessary.

5.2 Interceptor Inspection requirements

This procedure covers the inspection by the RE. This SOP stipulates the method of interceptor inspection on a monthly basis.

1. The Operations RE shall personally conduct a detailed visual examination of every interceptor chamber noting the presence of surface debris, oil (and in what quantities), bottom deposits, choked filters and flow diffusers (where applicable), the proper functioning of any mechanical devices and pumps, and any visible or suspected cracks.
2. The RE shall enter observations and suggested actions required in attached **Annex 2 – Template 10.1 – Interceptor Inspection Template**.

	File: SOP DPS 10 - Interceptor Inspection_r0_16-09-10	
	Environmental Management System	Page 4 of 10

3. Interceptor cleaning procedure should be initiated by the operations RE in case of contamination. The RE has to inform the Maintenance Section to Clean the interceptor according to SOP DPS 9 – Interceptor Cleaning.
4. If considerable cracks are noticed or there is a suspected leak, the RE should investigate further through level recording methods, before Interceptor Maintenance procedures are requested from the maintenance section.
5. The operations RE has to fill in the **Annex 2 – Template 10.1 – Interceptor Inspection** indicating whether any oils were present and an approximation of the quantity.

5.3 Reporting

The RE will ensure that the weekly generated forms, (**Annex 3 – Template 10.2 – Per Shift Interceptor inspection**) are filed and made easily available upon request.

The RE is to forward the original forms of **Annex 2 - Template 10.1 – Interceptor Inspection Template** to the station manager for archiving. A copy of the filled form is to be sent to the Maintenance engineer in case of contamination and another copy of the report is to be retained for operational reference.


6. Reference Documents

SOP DPS 9 – Interceptor Cleaning

Interceptor Inspection reports

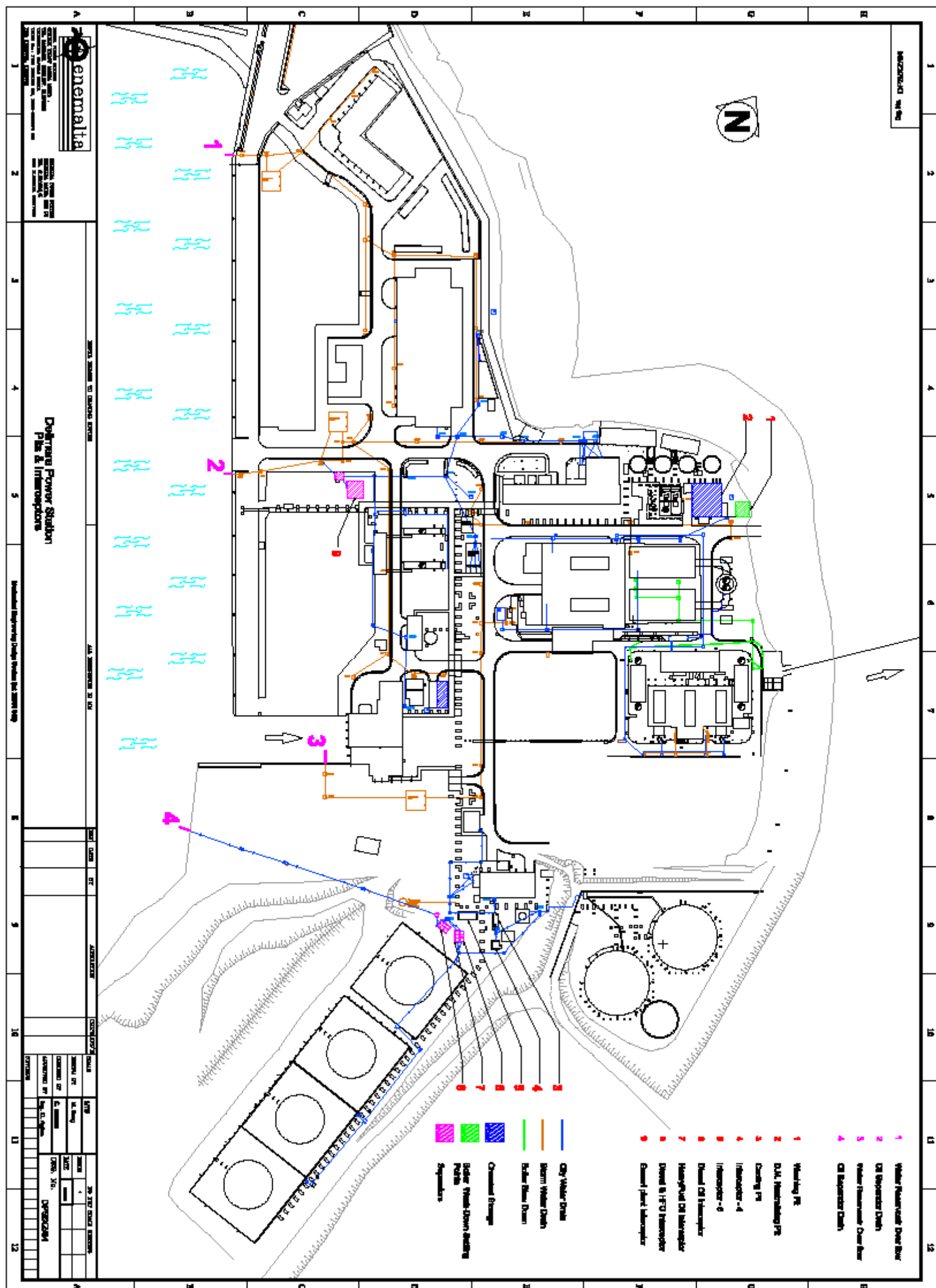
Waste Management Plan


DPS Emergency Plan

	File: SOP DPS 10 - Interceptor Inspection_r0_16-09-10	
	Environmental Management System	Page 5 of 10

Annex 1


Drawing DPS/XZ/84 – Pits and Interceptors



	File: SOP DPS 10 - Interceptor Inspection_r0_16-09-10	
	Environmental Management System	Page 7 of 10

Annex 2

Template DPS 10.1 - Interceptor Inspection Template

	File: SOP DPS 10 - Interceptor Inspection_r0_16-09-10	
	Environmental Management System	Page 8 of 10

Template 10.1 - Inspection of Interceptors at Delimara Power Station as per SOP Interceptor Inspection


Indicate location and quantity of contaminants or visible cracks where applicable

Interceptor	Contamination	Other Observations	Action
Fuel Heaters' Drains Cooling Pit			
Fuel Heaters' Drains interceptor			
Fuel Oil Tank Farm			
Diesel Oil Tank Farm			
Station Oily Water Interceptor			

Date: _____

Supervised by: _____
 Generation Officer Engineer

This document is to be kept by the Shift engineer for further verifications

	File: SOP DPS 10 - Interceptor Inspection_r0_16-09-10	
	Environmental Management System	Page 9 of 10

Annex 3

Template 10.2 – Per Shift Interceptor Inspection



Template 10.2 – Per Shift Interceptor Inspection Form

Date																						
	N	D	E	N	D	E	N	D	E	N	D	E	N	D	E	N	D	E	N	D	E	Comments
Heater Drains Cooler																						
Cool Drains Interceptor																						
Cool Drains Interceptor																						
Diesel Bunds Interceptor																						
HFO Bunds Interceptor																						
Polishing Interceptor																						
Stn Oily Drains Interceptor																						

Date																		
Signatures:																		
Night																		
Day																		
Evening																		

If the interceptor is clean and free of debris mark adjacent box with (/)

If there is an oil film or debris mark with (x) and report to **G.O.**